



High Class 공압식 액츄에이터

PNEUMATIC ACTUATORS

Rack & Pinion Designed

GD-SERISE Double Acting

GD-SERISE Single Acting (Spring Return)



GINICE Co., Ltd
www.ginice.co.kr / www.ginice.com

GD-SERISE / GS-SERISE

DESCRIPTION

- **GD / GS series**
pneumatic actuator are designed & developed with new concept for the next generation.
- **GD / GS series**
provide various & wide solutions with following characteristics.

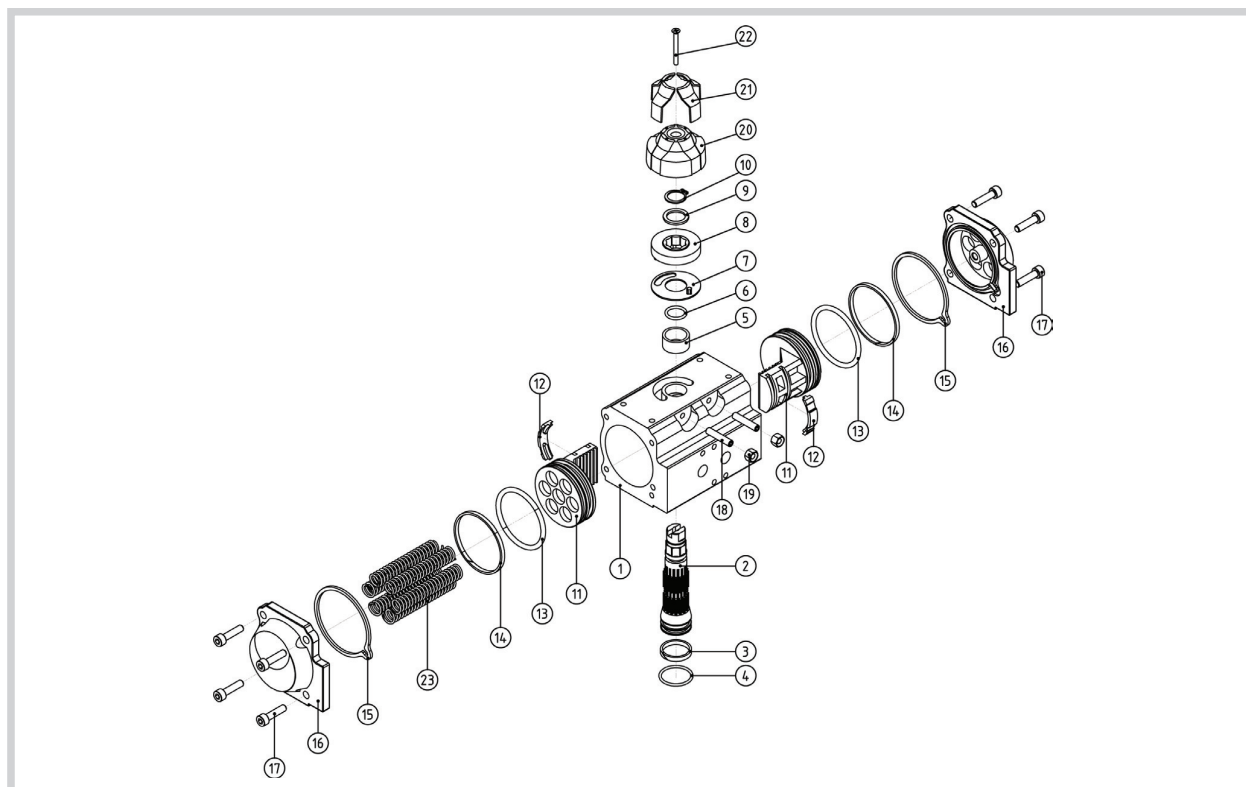
- Rack & Pinion type
- Double Acting & Spring Return (Single Acting)
- Wide range of torque range (Quarter Turn, Ball, Butterfly, Plug & Damper)
- Convenient for use
- High Performance

CONSTRUCTION

- 1 Aluminium alloy Body**
 - Hard anodized
 - Nickel plated
- 2 Dual piston rack & pinion designed**
- 3 Alloy steel pinion**
 - Nickel plated
- 4 Multifunction position Indicator**
- 5 DNBR Rubber pinion seal**
- 6 Internal and external stainless steel fasteners for long term corrosion resistance**
- 7 Full Open / Close position adjustment**
- 8 NAMUR accessory mounting**
 - VDI / VDE 3845
 - NAMUR Solenoid
- 9 Valve mounting pad**
 - ISO5211 / DIN 3337 (Int'l standard)



PART LIST – GD-35, GD/GS-50 ~ GD/GS - 125

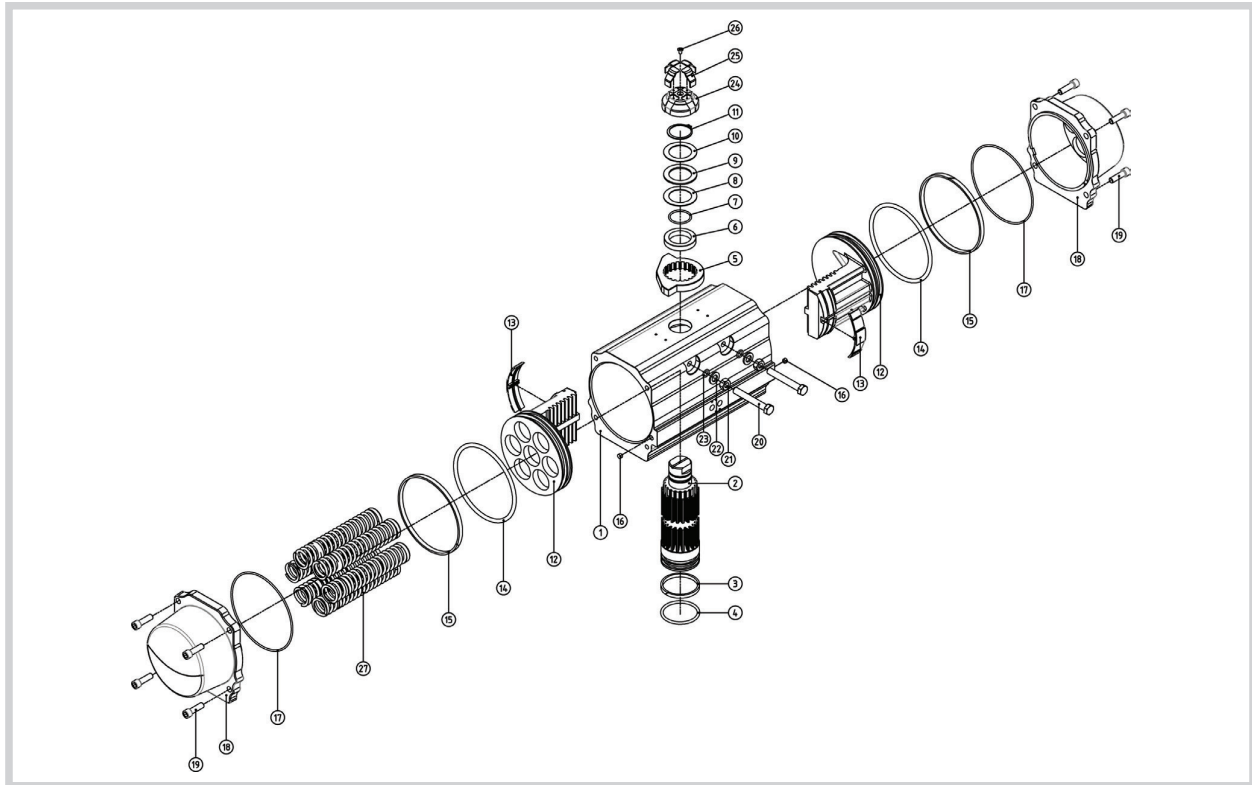


MATERIALS

No.	Unit Q'ty	Part Name	Standard material	Corrosion protection	Optional
1	1	Body	Aluminum alloy	Hard anodized	-
2	1	Shaft	Steel alloy	Nickel plated	-
3	1	Shaft Bushing (Bottom)	PTFE	-	-
4	1	Shaft O-ring (Bottom)	NBR	-	Viton / Silicone
5	1	Shaft Bushing (Top)	PTFE	-	-
6	1	Shaft O-ring (Top)	NBR	-	Viton / Silicone
7	1	Flat Bushing	PTFE	-	-
8	1	Stopper	Stainless steel	-	-
9	1	Flat Washer	Stainless steel	-	-
10	1	Snap Ring	Stainless steel	Nickel plated	-
11	2	Piston	ADC12	Hard anodized	-
12	2	Piston Guide	Acetal	-	-
13	2	Piston O-ring	NBR	-	Viton / Silicone
14	2	Piston Backup Ring	PTFE	-	-
15	2	Cover O-ring	NBR	-	Viton / Silicone
16	2	Cover	AC4C	Chromate + Polyester coated	-
17	8	Cover Bolt	Stainless steel	-	-
18	2	Stopper Bolt	Stainless steel	-	-
19	2	Stopper Nut	Stainless steel	-	-
20	1	Indicator Cap	ABS	-	-
21	4	Indicator	ABS	-	-
22	1	Indicator Bolt	Stainless steel	-	-
23	Vary	Spring	PW-1	-	-

GD-SERISE / GS-SERISE

PART LIST – GD/GS - 145 ~ GD/GS - 210



MATERIALS

No.	Unit Q'ty	Part Name	Standard material	Corrosion protection	Optional
1	1	Body	Aluminum alloy	Hard anodized	-
2	1	Shaft	Steel alloy	Nickel plated	-
3	1	Shaft Bushing (Bottom)	PTFE	-	-
4	1	Shaft O-ring (Bottom)	NBR	-	Viton / Silicone
5	1	Stopper	Stainless steel	-	-
6	1	Shaft Bushing (Top)	PTFE	-	-
7	1	Shaft O-ring (Top)	NBR	-	Viton / Silicone
8	1	Flat Washer	Stainless steel	-	-
9	1	Flat Bushing	PTFE	-	-
10	1	Flat Washer	Stainless steel	-	-
11	1	Snap Ring	Stainless steel	Nickel plated	-
12	2	Piston	ADC12	Hard anodized	-
13	2	Piston Guide	Acetal	-	-
14	2	Piston O-ring	NBR	-	Viton / Silicone
15	2	Piston Backup Ring	PTFE	-	-
16	2	O-ring	NBR	-	-
17	2	Cover O-ring	NBR	-	Viton / Silicone
18	2	Cover	AC4C	Chromate + Polyester coated	-
19	8	Cover Bolt	Stainless steel	-	-
20	2	Stopper Bolt	Stainless steel	-	-
21	2	Stopper Nut	Stainless steel	-	-
22	2	Stopper Bolt Washer	Stainless steel	-	-
23	2	Stopper Bolt O-ring	NBR	-	-
24	1	Indicator Cap	ABS	-	-
25	4	Indicator	ABS	-	-
26	1	Indicator Bolt	Stainless steel	-	-
27	Vary	Spring	PW-1	-	-

ACTUATOR SPECIFICATION

- **Working Pressure** Max. 10bar (145psig), Double acting / Spring return : 2.5 ~ 8bar
- **Working Temperature** Standard / -20°C ~ 80°C (-4°F ~ 175°F), Available up to -35°C when change O-Ring material.
- **Operating Media** Clean Dry Air
- **Rotation** 90°±5°
- **Life cycle** 500,000 operations

ACTUATOR APPLICATION SIZE

Note) TORQUE : AIR PRESSURE - 5bar(Standard)

Type	Model	Valve Limit of application (적용범위)	
		Butterfly valve(10K)	2Way Flanged Ball valve(10K)
Double Acting	GD-35	-	15A
	GD-50	40A, 50A	15A, 20A
	GD-63	50A, 65A	25A, 32A
	GD-75	80A ~ 100A	40A, 50A
	GD-88	125A, 150A	65A, 80A
	GD-100	200A	80A, 100A
	GD-125	200A ~ 250A	100A, 125A
	GD-145	250A	125A
	GD-170	300A	125A, 150A
	GD-190	300, 350A	150A, 200A
	GD-210	400A ~ 450A	200A, 250A

Type	Model	Valve Limit of application (적용범위)	
		Butterfly valve(10K)	2Way Flanged Ball valve(10K)
Single Acting	-	-	15A
	GS-50	40A	15A, 20A
	GS-63	40A, 50A	20A, 25A
	GS-75	65A	32A, 40A
	GS-88	65A, 80A	40A
	GS-100	100A, 125A	40A, 50A
	GS-125	125A, 150A	65A-100A
	GS-145	200A	100A, 125A
	GS-170	250A	125A, 150A
	GS-190	300A	150A
	GS-210	350A ~ 400A	200A

CONNECTION



- Side mounting connection is designed in accordance with VDI, VDE3845 NAMUR standard to install solenoid valve.
- With Stopper (Stop arrangement)



- Bottom mounting connection is designed in accordance with ISO5211 and DIN3337 standard for direct mounting with valves.
- Star drive and square insert permits easy installation of the actuator directly.